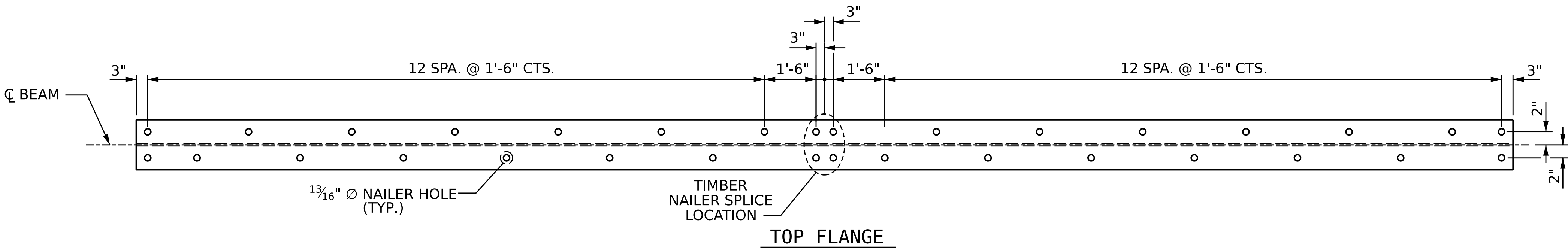
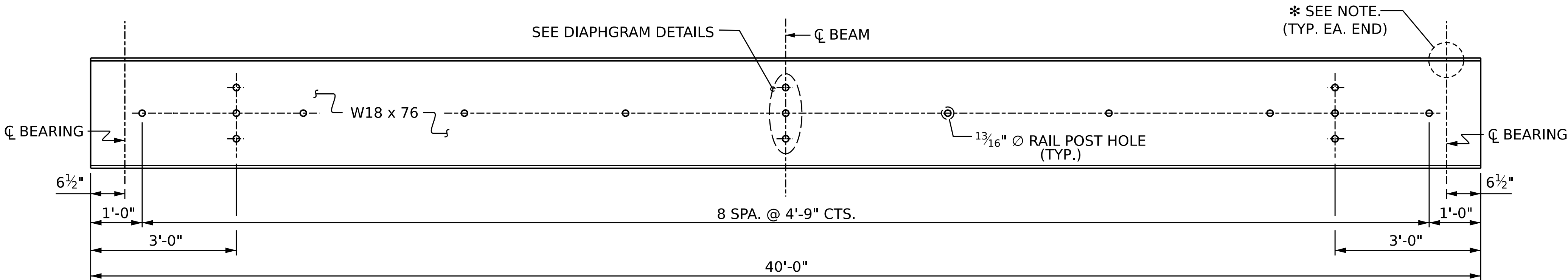


FRAMING PLAN



TOP FLANGE



ELEVATION

(SHOWING RAIL POST HOLES FOR EXTERIOR BEAMS
INTERIOR BEAMS ARE SIMILAR BUT WITHOUT RAIL POST HOLES)

BEAM DETAILS

NOTES

NO SALVAGED BEAMS SHALL BE USED, UNLESS OTHERWISE NOTED ON THE PLANS.

NO SHOP CAMBER REQUIRED, TURN NATURAL MILL CAMBER UP.

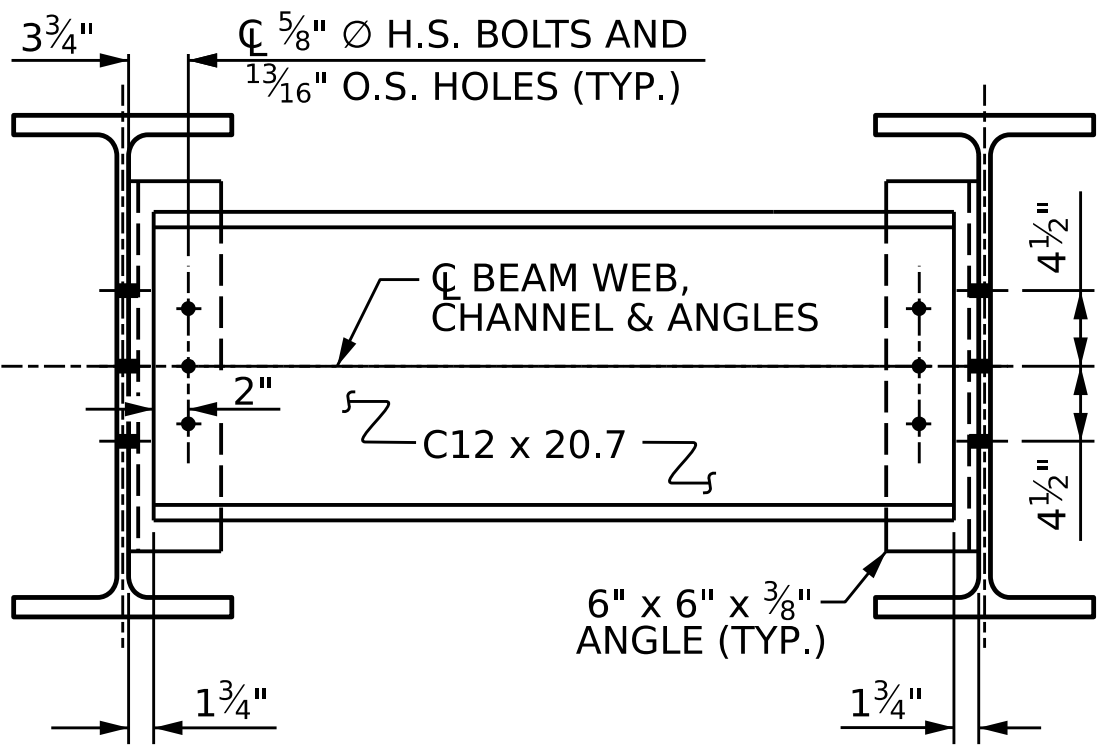
ALL STRUCTURAL STEEL FIELD CONNECTIONS SHALL BE 5/8" DIA. GALVANIZED HIGH STRENGTH BOLTS UNLESS OTHERWISE NOTED.

CONTRACTOR'S OPTION TO WELD CONNECTOR TO BEAM PRIOR TO SHOP COATING.

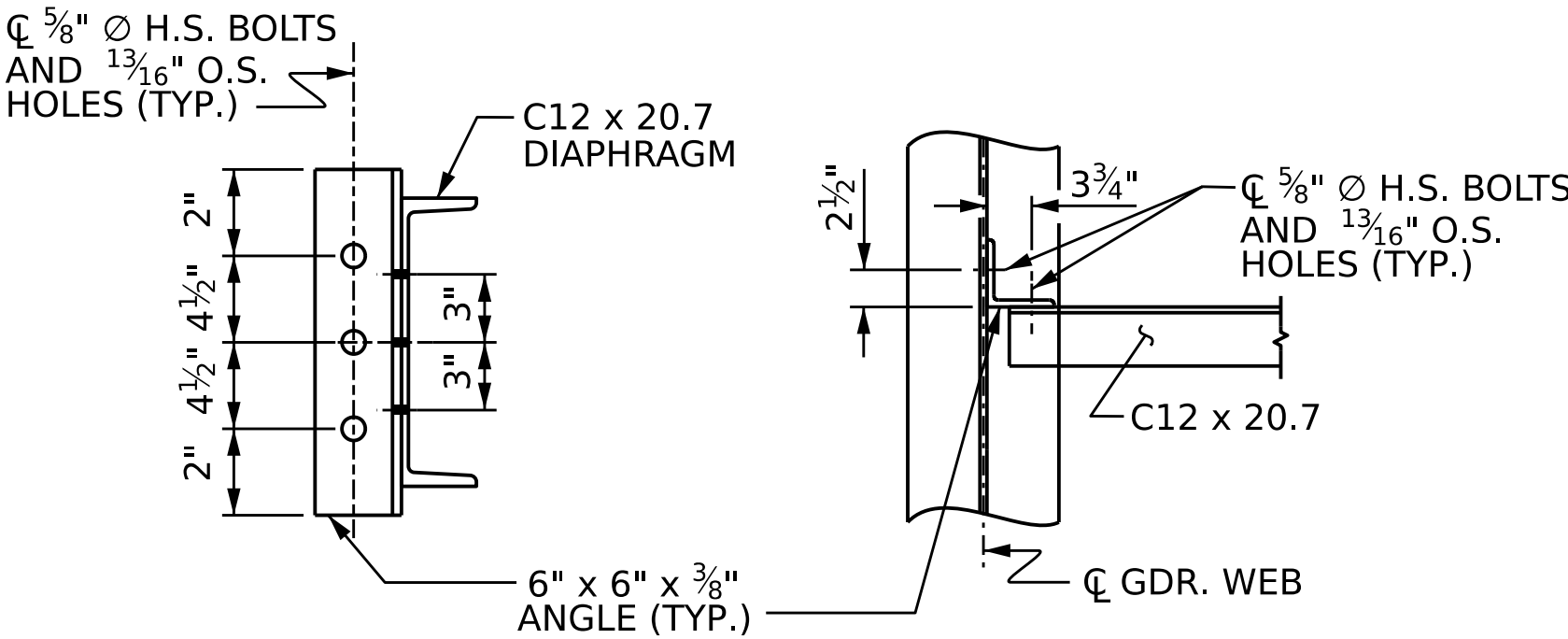
SEE GENERAL DRAWING NOTES FOR COATING.

A CHARPY V-NOTCH TEST IS REQUIRED ON ALL BEAM SECTIONS IN ACCORDANCE WITH ARTICLE 1072-9 OF THE STANDARD SPECIFICATIONS.

* FOR SIZE AND LOCATION OF OPTIONAL BOLTED SOLE PLATE, SEE BEARING DETAILS SHEET.



INTERIOR DIAPHRAGM DETAIL



PROJECT NO. DF18314.2045324

HENDERSON COUNTY

STATION: 11+67.50 -L-



STATE OF NORTH CAROLINA
DEPARTMENT OF TRANSPORTATION
RALEIGH
STANDARD
SUPERSTRUCTURE
**FRAMING PLAN FOR
40' BEAM LENGTH
90° SKEW**

DOCUMENT NOT CONSIDERED FINAL
UNLESS ALL SIGNATURES COMPLETED
TGS ENGINEERS
201 W. MARION ST STE 200
SHELBY, NC 28150
PH (704) 476-0003
CORP. LICENSE NO.: C-0275

REVISIONS					SHEET NO.
NO.	BY:	DATE:	NO.	BY:	
1			3		S-6
2			4		
TOTAL SHEETS					13

ASSEMBLED BY:	ZCS	DATE :	5/25
CHECKED BY :	MGC	DATE :	7/25
DRAWN BY :	BNB	4/24	
CHECKED BY :	JDH	10/24	